

# ACOMA BUSINESS CENTER • SCOTTSDALE AIRPARK **OFFICE/WAREHOUSE FOR LEASE ±7,482 SF**

7812 E ACOMA DRIVE • SUITE 1 • SCOTTSDALE ARIZONA 85260

**100%  
HVAC**

## **TWO-STORY SUITE WITH CONTEMPORARY FINISHES • PRIME LOCATION!**

### **FIRST FLOOR | ±4,566 SF:**

- Reception
- Conference room
- Three (3) offices
- Kitchen/break room

### **FIBER AVAILABLE**

- Two (2) restrooms, each with 2 stalls
- 100% HVAC warehouse
- Shared dock-high space
- Outdoor patio

### **SECOND FLOOR | ±2,916 SF:**

- Large open flex space
- Three (3) offices
- Break area
- Mezzanine freight lift

**LOTS OF POWER!**

**650 AMPS/208Y/120V**

**For additional information please contact**



**John Quatrini**  
Associate Broker  
C 602.859.0506

[john@shellcommercial.com](mailto:john@shellcommercial.com)



**Suzanne Enright**  
Senior Associate  
C 602.471.2981

[suzanne@shellcommercial.com](mailto:suzanne@shellcommercial.com)



**O 480 443 3992 16410 N 91st Street  
Suite 112 Scottsdale, AZ 85260  
[www.shellcommercial.com](http://www.shellcommercial.com)**

The above is subject to prior sales and leasing. This information has been secured from sources we believe to be reliable, but we make no representation or warranties, expressed or implied as to the accuracy of this information.

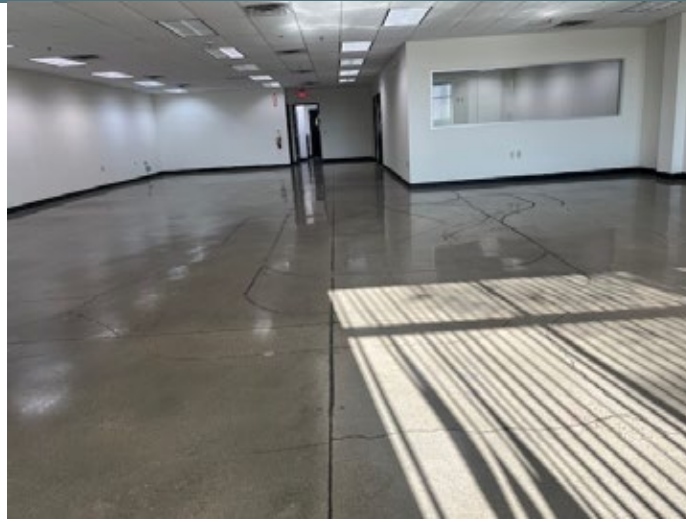


# PHOTOS

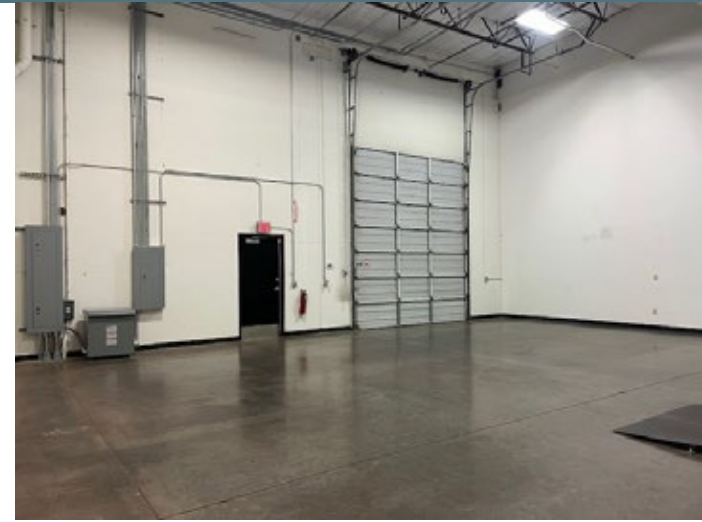
7812 E ACOMA DRIVE • SUITE 1 • SCOTTSDALE ARIZONA 85260



**FIRST FLOOR OPEN/FLEX**



**SECOND FLOOR MEZZANINE**



**100% HVAC WAREHOUSE**



**MEZZANINE FREIGHT LIFT**



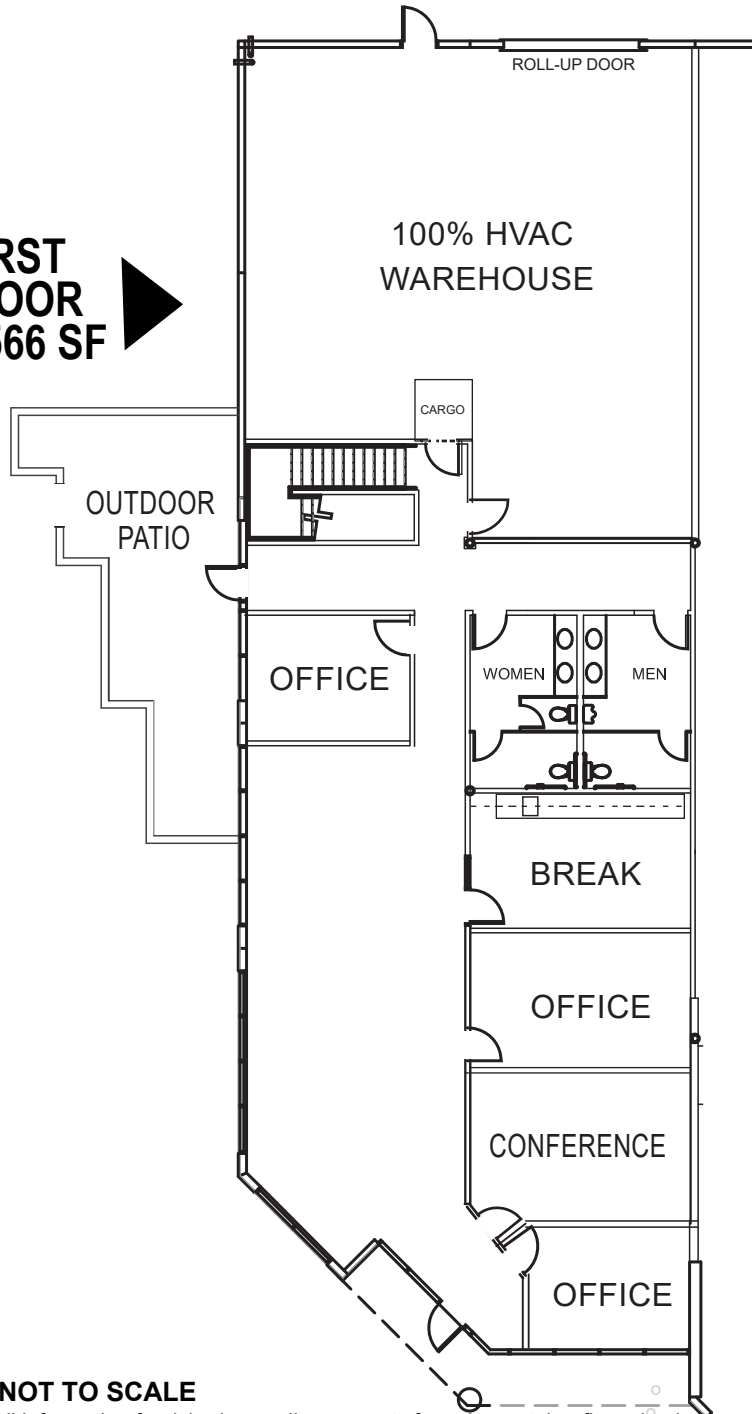
**KITCHEN**



**OUTDOOR PATIO**

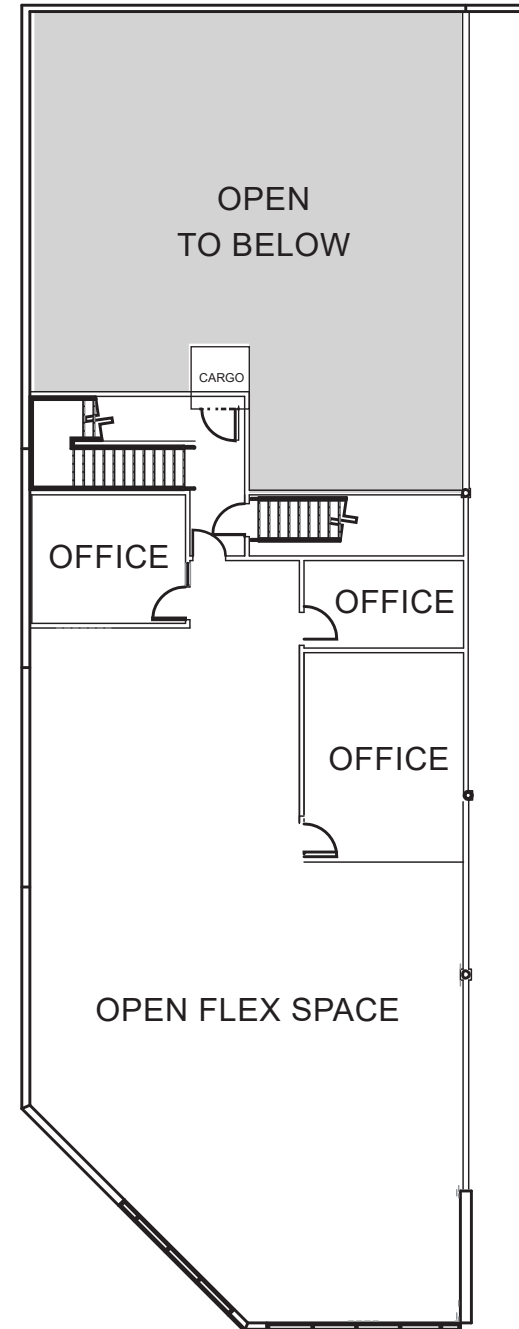
The above is subject to prior sales and leasing. This information has been secured from sources we believe to be reliable, but we make no representation or warranties, expressed or implied as to the accuracy of this information.

**FIRST  
FLOOR  
±4,566 SF** ➤



**FLOOR PLAN  
±7,482 SF**

**SECOND  
FLOOR  
±2,916 SF** ➤



**NOT TO SCALE**

All information furnished regarding property for sale, rental or financing is from sources deemed reliable, but no warranty or representation is made to the accuracy thereof and same is submitted to errors, omissions, change of price, rental or other conditions, prior to sale, lease or financing or withdrawal without notice. No liability of any kind is to be imposed on the broker herein. has been secured from sources deemed reliable, however, we make no warranties as to its accuracy.



7812 E ACOMA DRIVE • SUITE 1 • SCOTTSDALE ARIZONA 85260

## AERIAL



The above is subject to prior sales and leasing. This information has been secured from sources we believe to be reliable, but we make no representation or warranties, expressed or implied as to the accuracy of this information.



7812 E ACOMA DRIVE • SUITE 1 • SCOTTSDALE ARIZONA 85260

## LOCATION MAP



The above is subject to prior sales and leasing. This information has been secured from sources we believe to be reliable, but we make no representation or warranties, expressed or implied as to the accuracy of this information.